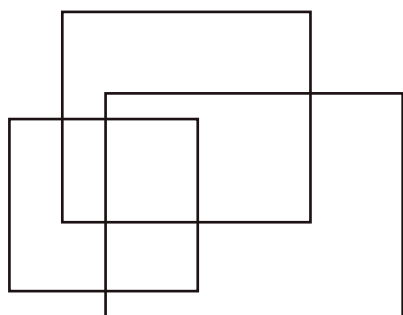
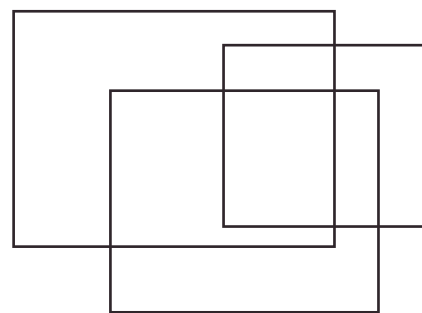


# Photo book



By Alicja Kur

# Canon EOS 550D

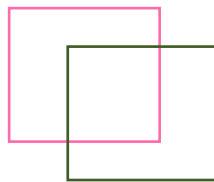


The Canon EOS 550D is a popular DSLR camera with three focus modes: One-Shot AF, AI Focus AF, and AI Servo AF. To set focus points, you can choose from nine autofocus points manually or use automatic mode. It offers high-resolution images with a maximum resolution of 5184 x 3456 pixels and different quality settings like JPEG and RAW formats. Is particularly good at producing high-quality images and videos, thanks to its 18-megapixel sensor and Full HD video recording capabilities. It also has a fast autofocus system, which makes it well-suited for capturing action and movement.

# Programs for beginners



The program "Manual" has full control over both the aperture and shutter speed settings. what can give you be full creative. It maybe not typical for the beginners but is not that hard as well.



The program "Aperture Priority" it provides a good balance between control and automation. Beginners can focus on adjusting the aperture to control the depth of field and achieve their desired artistic effect, while the camera takes care of setting the appropriate shutter speed for proper exposure.





# Hidden faces



Funny hidden face  
This face reminds me of such a jolly  
face mainly because of the tubes  
which look a bit like horns.

Place: Maastricht

Smiling hidden face  
The lower part reminds me of a smile  
and the lamps remind me of eyes.

Place: Maastricht



Surprised hidden face  
It's a hydrant where the hole on the  
verve reminds an open mouth as if  
surprised.

Place: Maastricht



# Waterfall

High Shutter Speeds



Shutter Speed Value:  
1/20  
Exposure Program:  
Shutter priority (TV)  
Exposure Time: 1/20  
Place: Eindhoven

Medium Shutter  
Speeds



Exposure Program:  
Shutter priority (TV)  
Exposure Time: 1/500  
Shutter Speed Value:  
1/512  
Place: Eindhoven

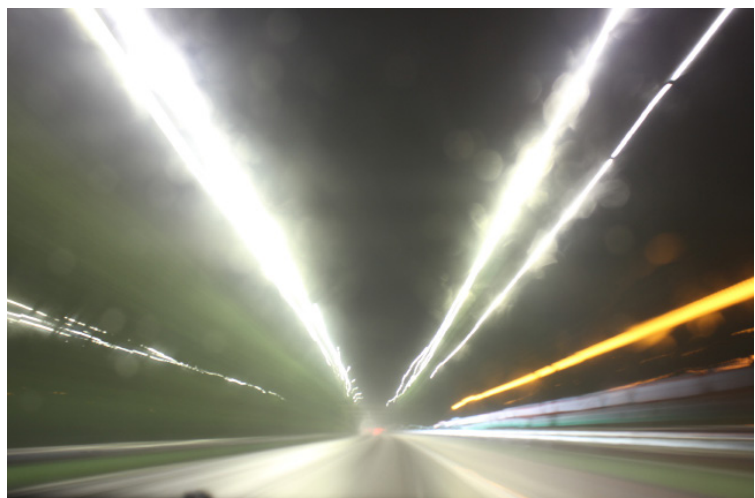
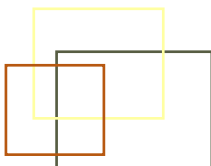
Low Shutter Speeds



Exposure Program:  
Shutter priority (TV)  
Exposure Time: 1/1250  
Shutter Speed Value:  
1/1327  
Place: Eindhoven

You can use the Shutter Speed for photos various picture compositions and different subjects: Freezing Action, Motion Blur, Long Exposures

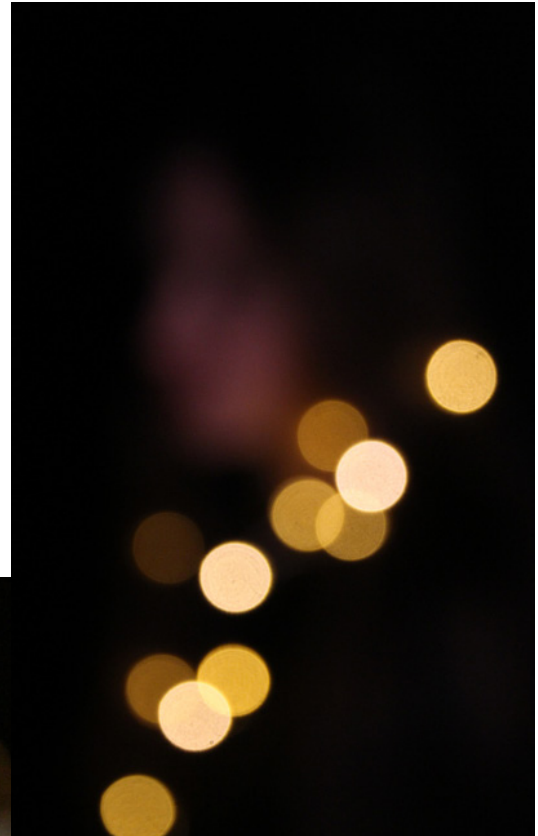
Place: Maastricht



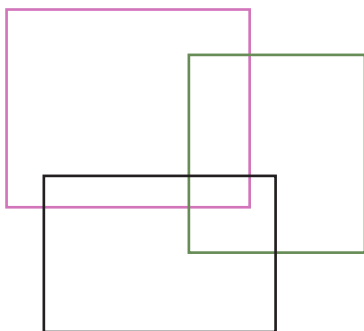


# DOF

These two photos were taken in our photo studio at the university. I used the lowest aperture: 5 and this is the effect I got. High Aperture we can use for example for: Enhanced Texture and Sharpness, Sunstars and Flare and low for: Low-light Photography,



Place: Belgium



# Noise

In my situation, the ISO greatly affected the light. I was more interested in capturing the fire than the wood so the iso was very high. I had to use a low iso to capture the wood and fire.



ISO Speed Ratings: 3,200  
Place: Poland



ISO Speed Ratings: 400  
Place: Poland



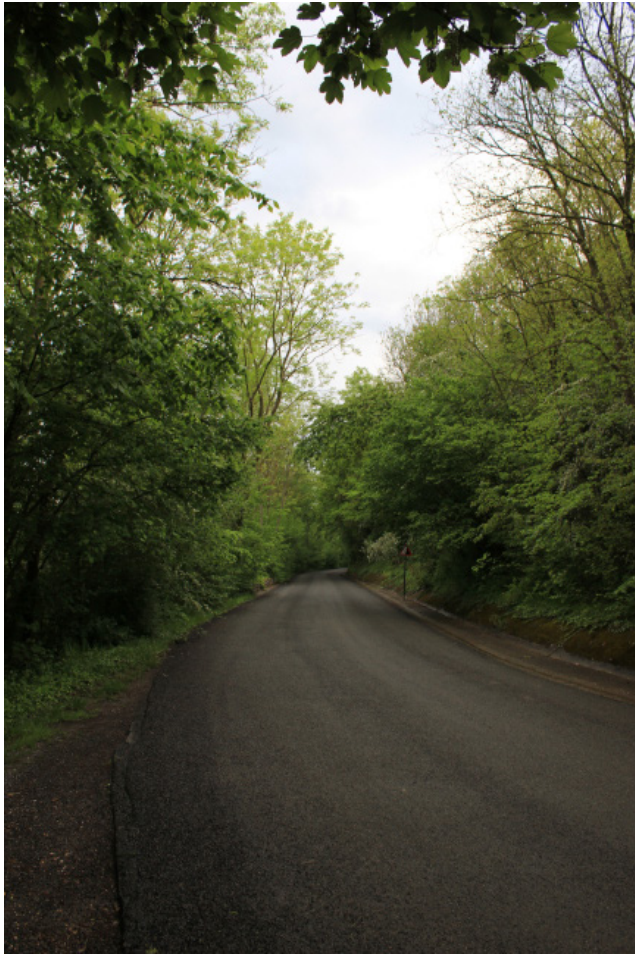
Place: Poland



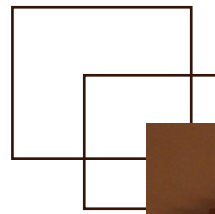
Place: Poland



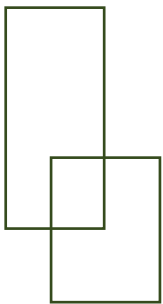
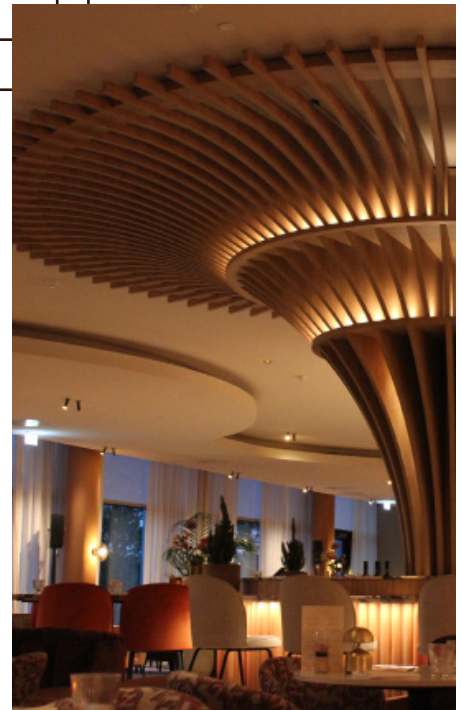
# Picture composition



Symmetry  
Place: Maastricht



Lines  
Place: Eindhoven

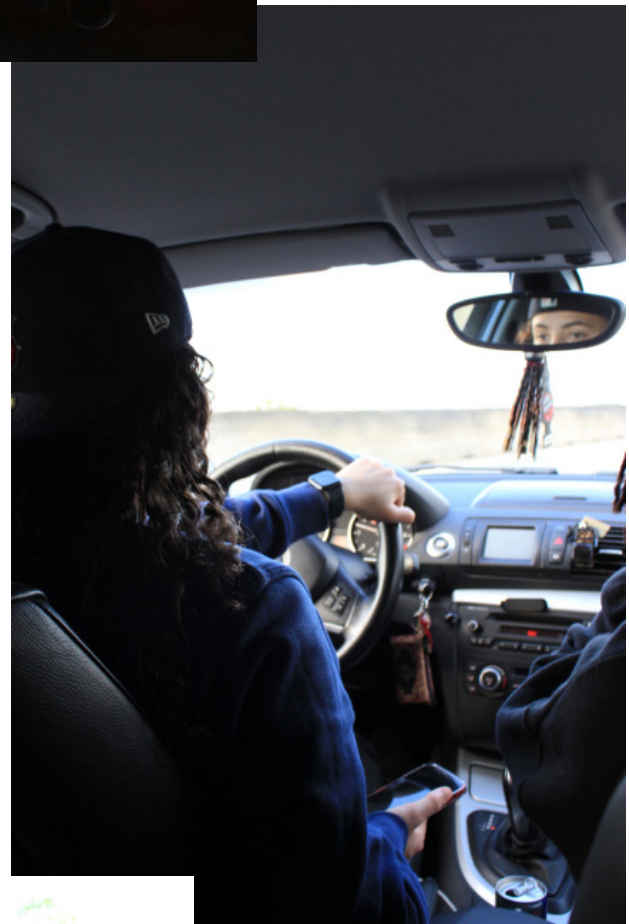
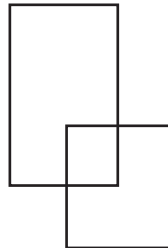


Central Perspective  
Place: Maastricht





Rule of thirds  
Place: Poland



Background / Foreground  
Place: Belgium

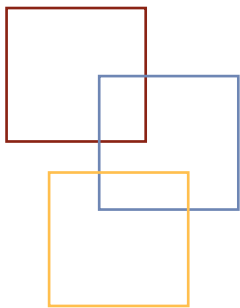


Blur and Movement  
Place: Maastricht

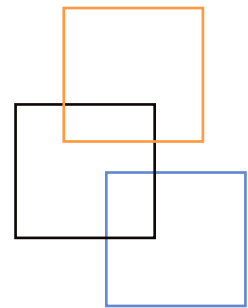
# White balance



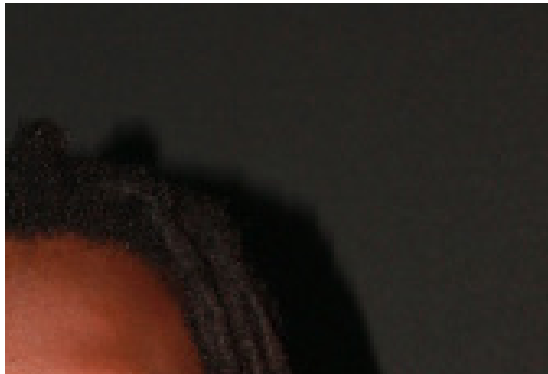




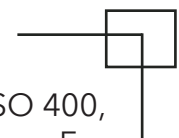
By intentionally adjusting the white balance, you can evoke different emotions and atmospheres in your photos. Choosing a warmer white balance (higher Kelvin temperature) creates a cozy and nostalgic ambiance, often seen in sunset or candlelit scenes. Conversely, opting for a cooler white balance (lower Kelvin temperature) produces a sterile or icy effect, frequently employed to depict colder environments.



# Portrait 01



The photo was taken in our studio at the school. In the photo is my friend Kyle. As you can see I wanted the photo to be serious, without smiling. A bit in the style of those prison photographs

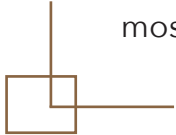


The settings I used were: ISO 400, Flash On, Portrait Program, Focal Length 53. The flash was most important to capture the clearest photo possible and the iso such that the photo was not too bright or too dark

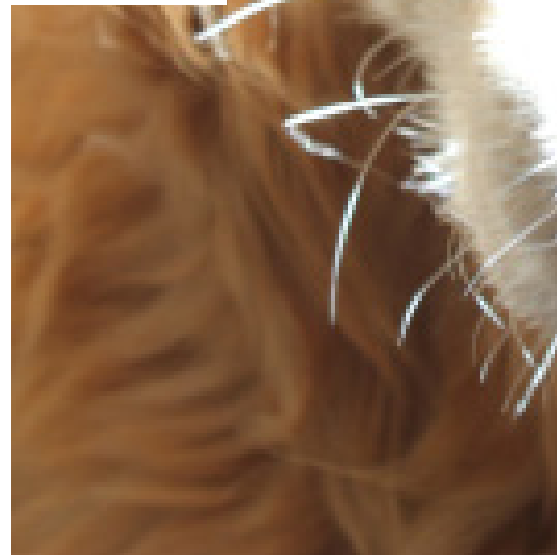


# Portrait 02

The photo was taken in Poland at my family home and the portrait features my dog. I wanted to focus most on his eyes so that he looked quite serious and focused

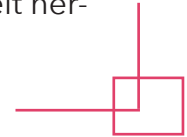


The settings I used were: ISO 100, Flash Off, Manual Program, Focal Length 41. I wanted the photo to look the way it looks to the human eye that's why I used Focal Length 41.



# Portrait 03

The photo was taken in our studio at the school. In the photo is my friend Melisa. The portrait was supposed to be loose, so that Melissa felt herself without any meaning



The settings I used were: ISO 2500, Flash Off, AV Program, Focal Length 55

I was very keen to capture the blue-rose light that fell on Melissa.

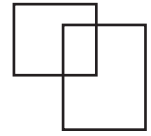




# Landscape / Architecture



Architecture  
Place: Maastricht

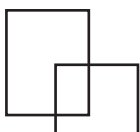


Landscape  
Place: Maastricht



Architecture  
Place: Belgium

Landscape  
Place: Maastricht





# Background compression



Focal Length: 55  
Place: Eindhoven

Background compression can help with Sports photography, Portrait photography and Wildlife photography.

I saw that different focal lengths can affect the depth of field. Longer focal lengths tend to have a shallower depth of field, blurring the background and isolating the subject.



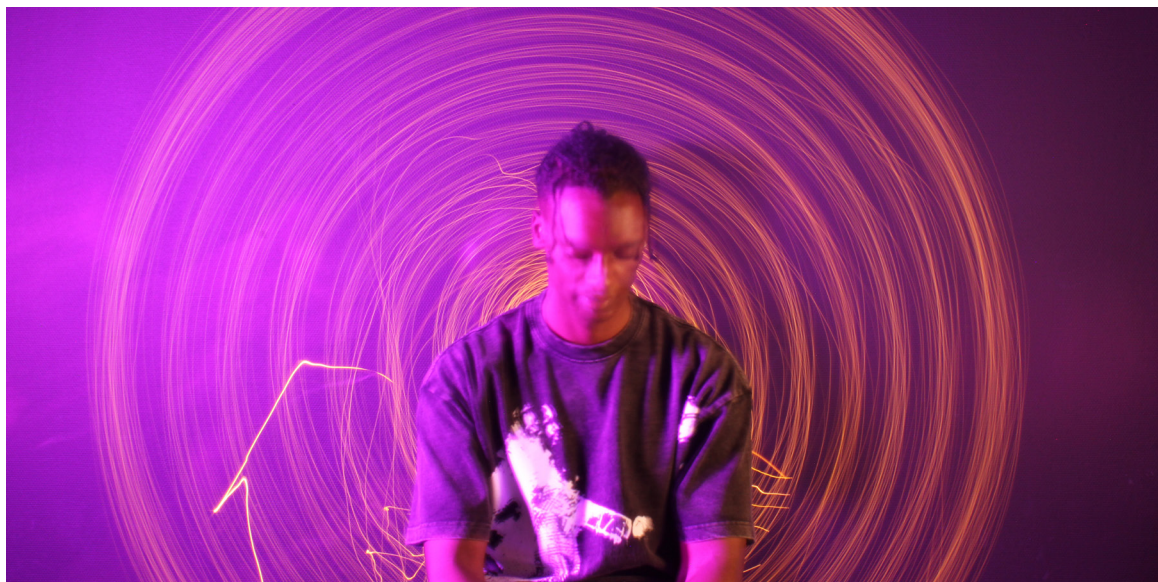
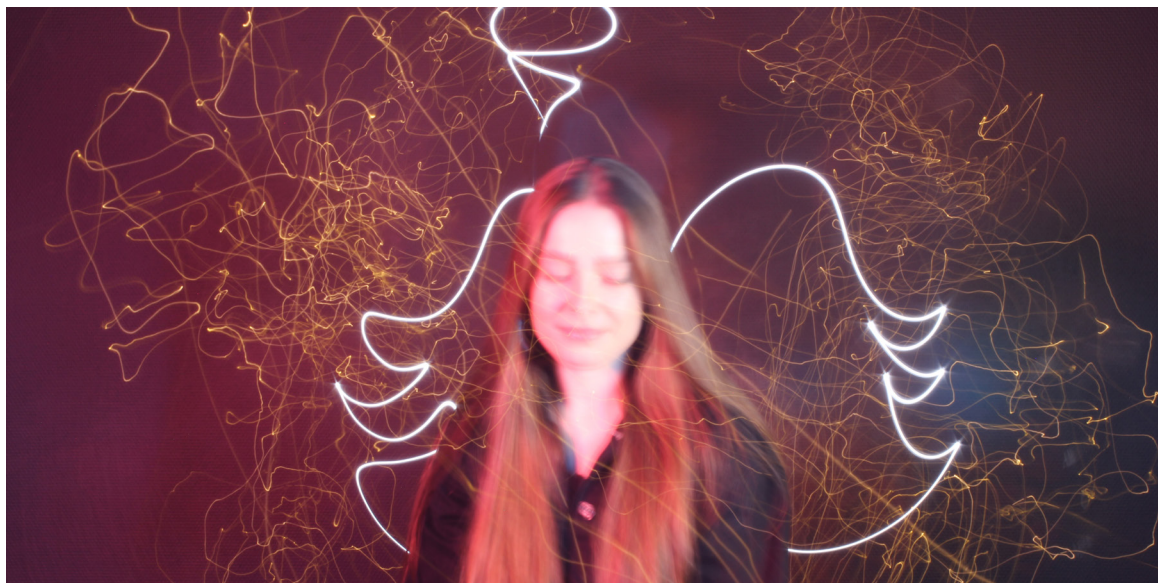
Focal Length: 43  
Place: Eindhoven



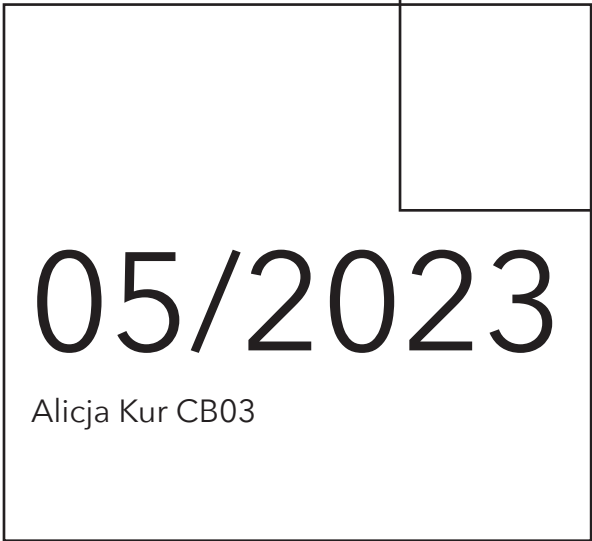
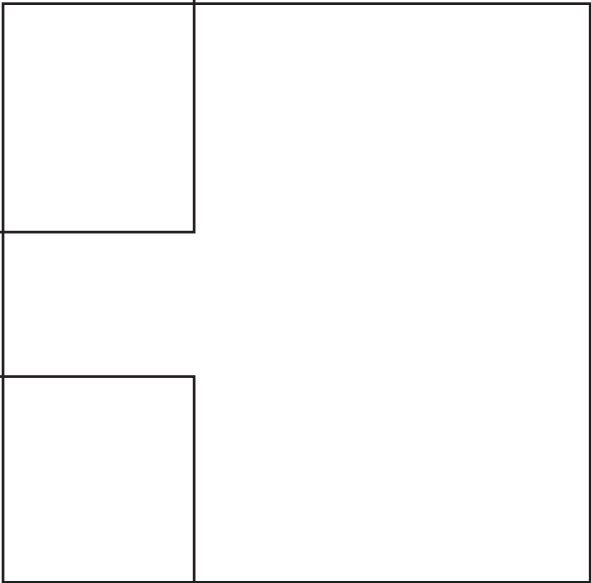
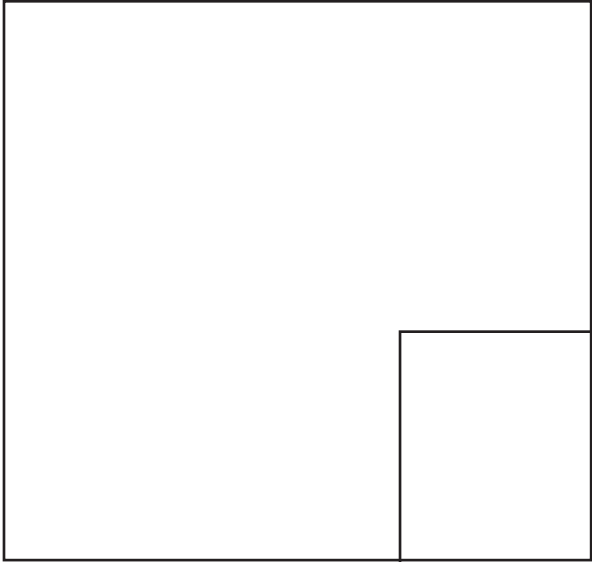
Focal Length: 24  
Place: Eindhoven



# Lightpainting







05/2023

Alicja Kur CB03